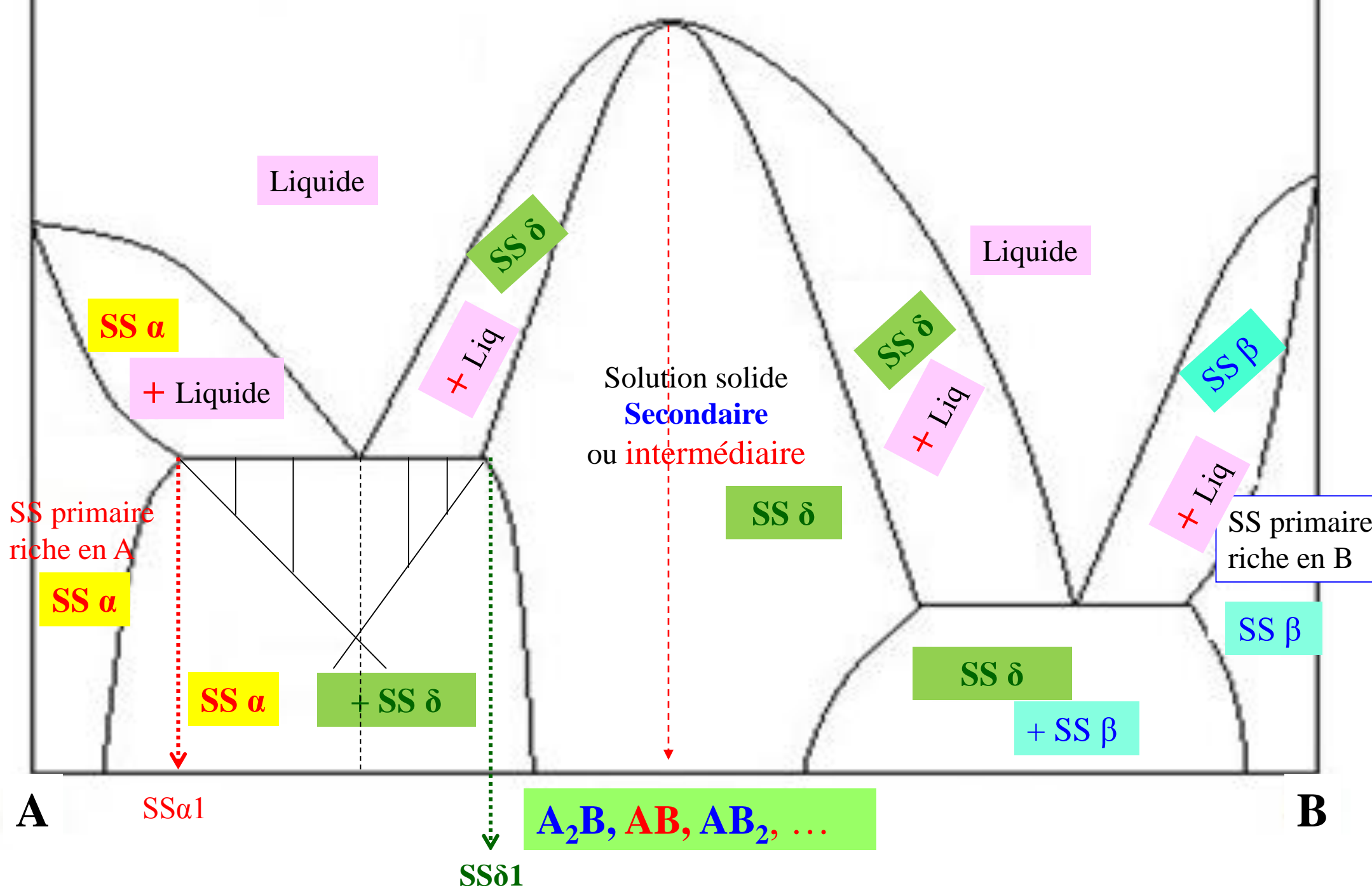
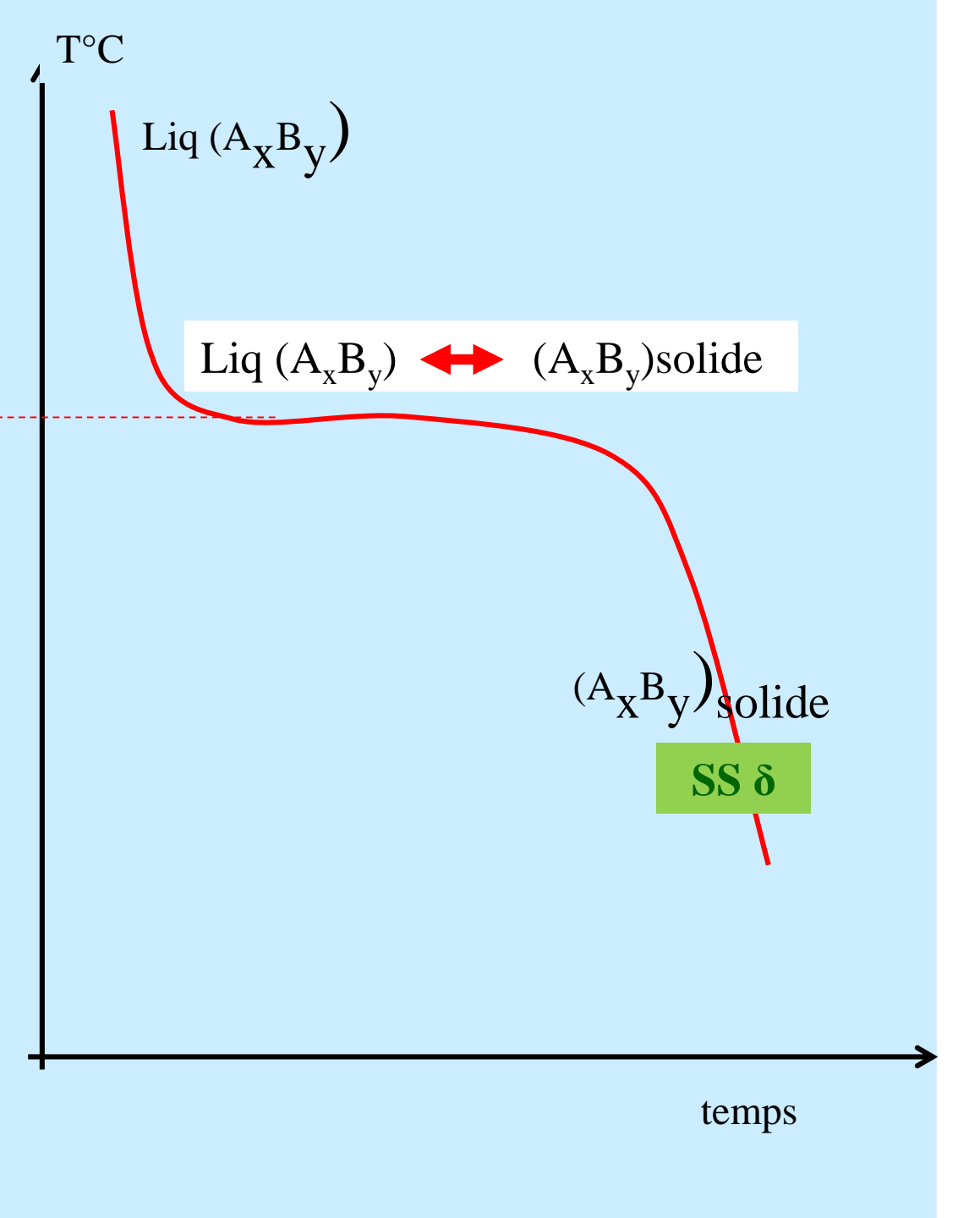
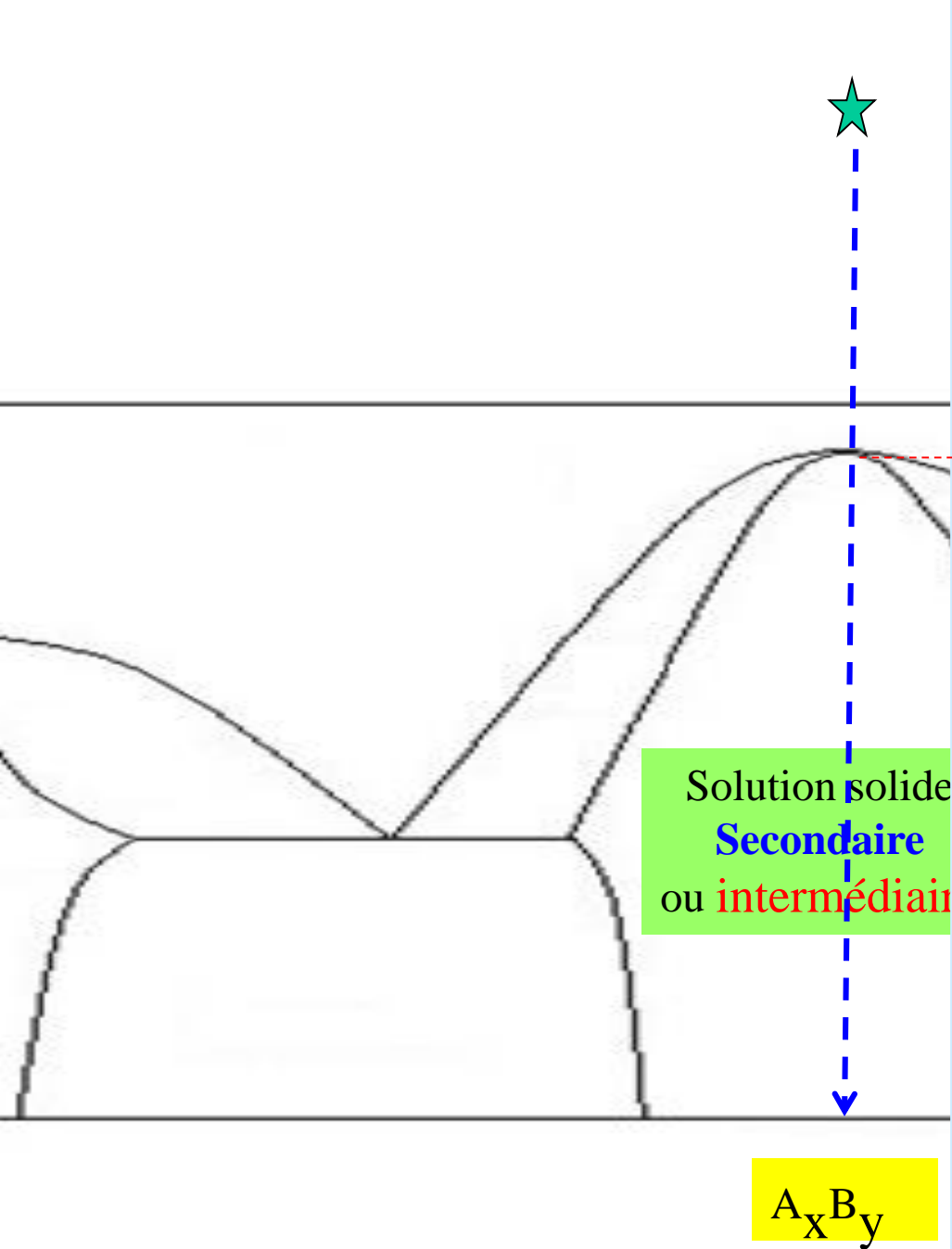
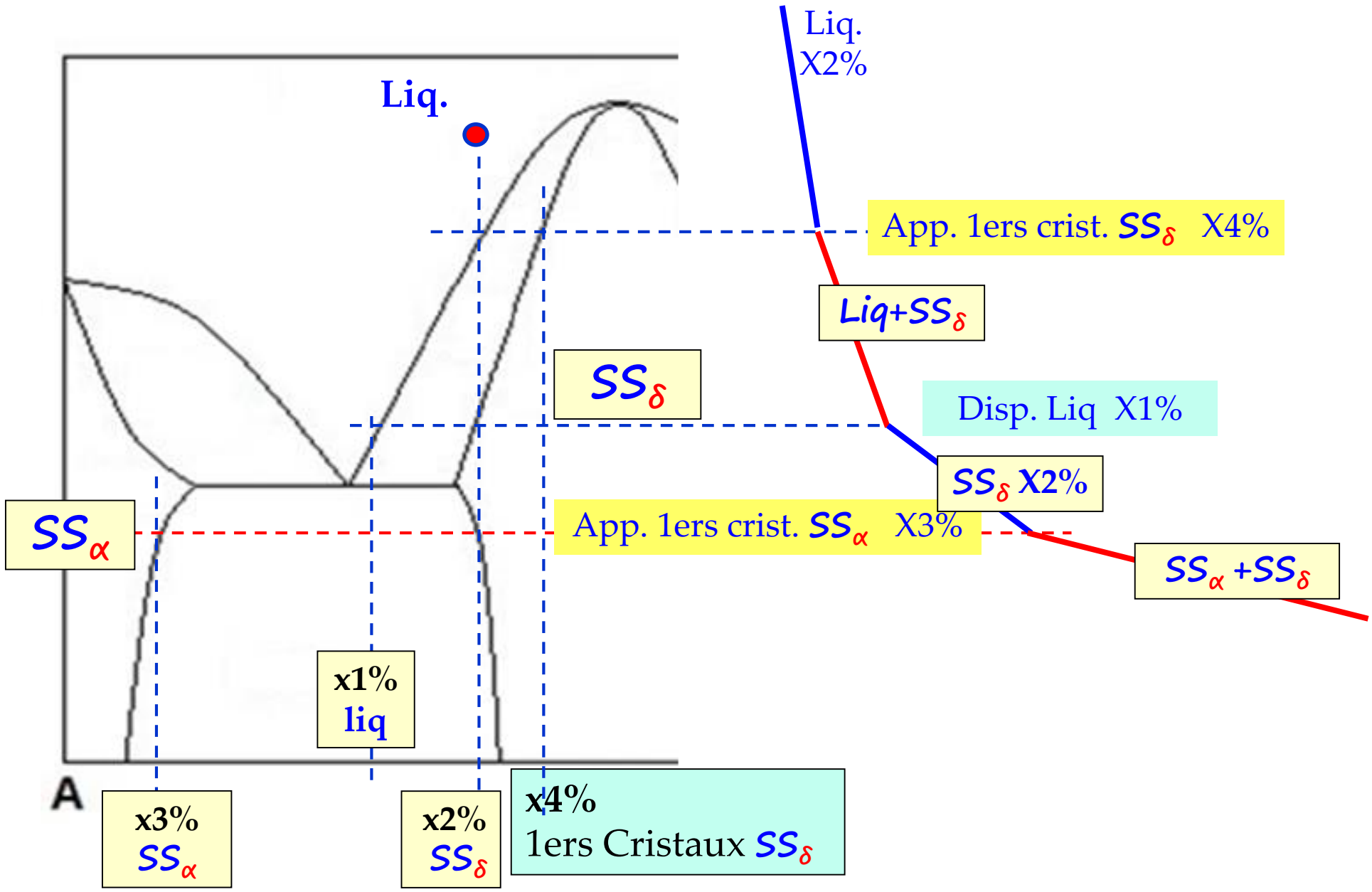


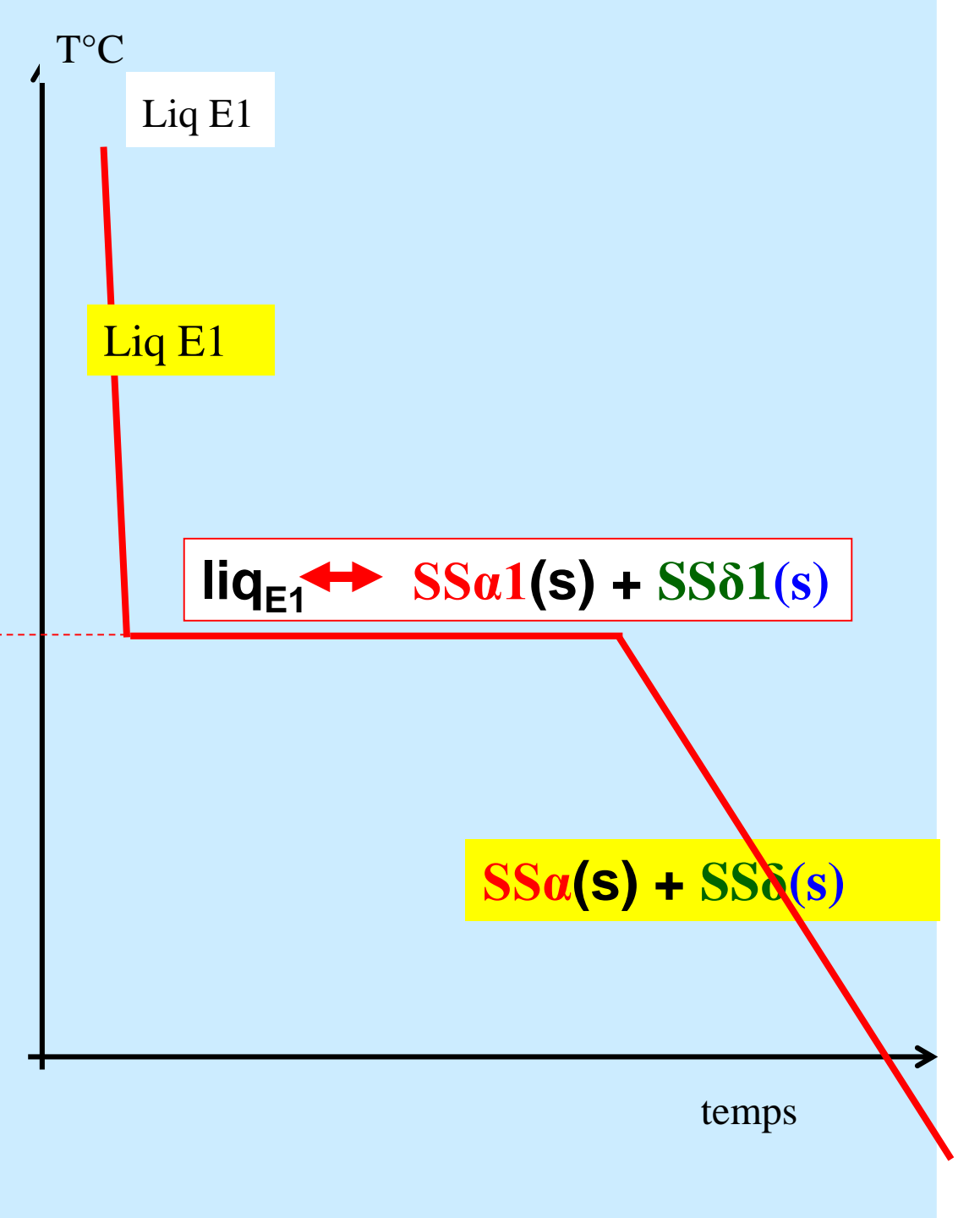
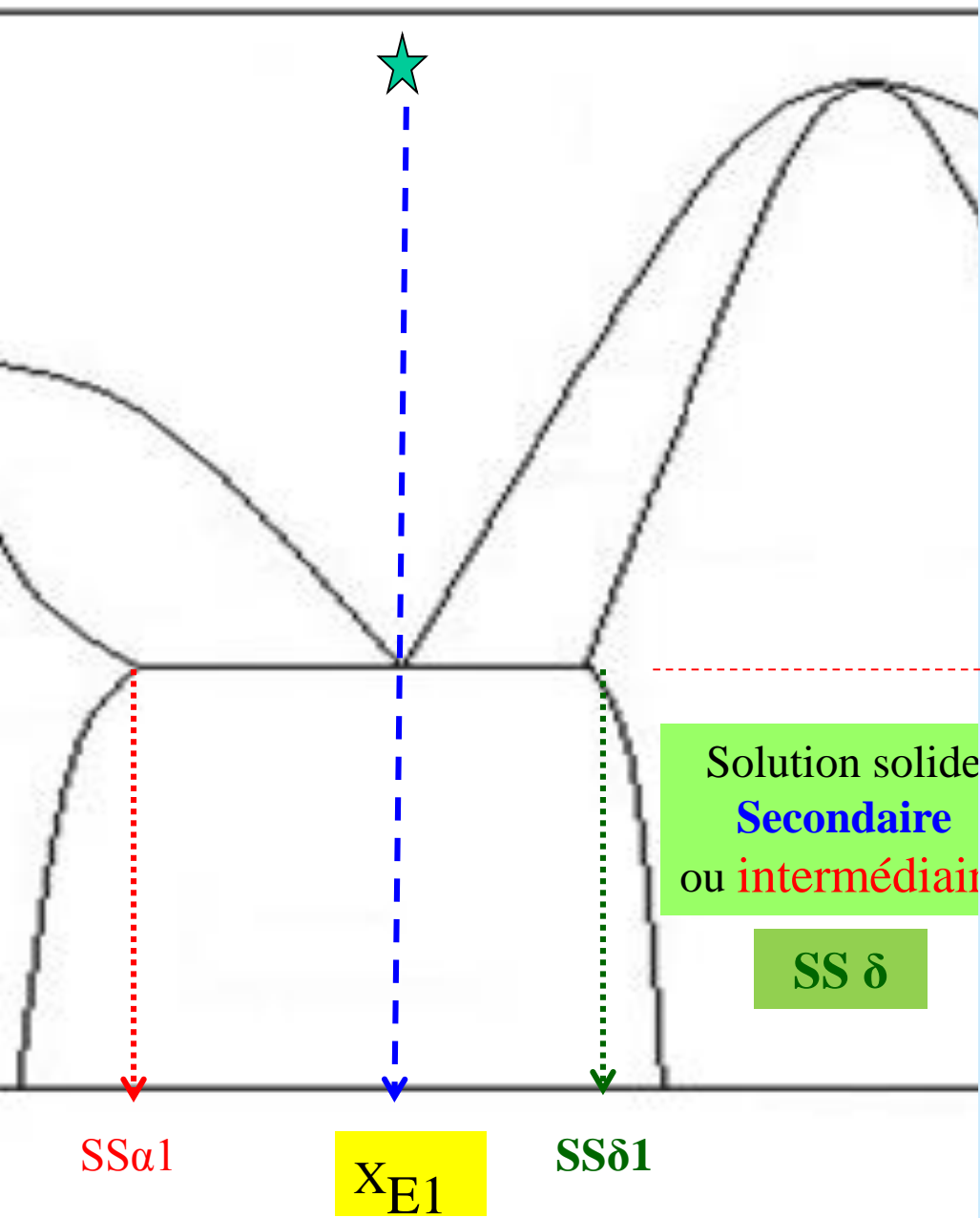
A

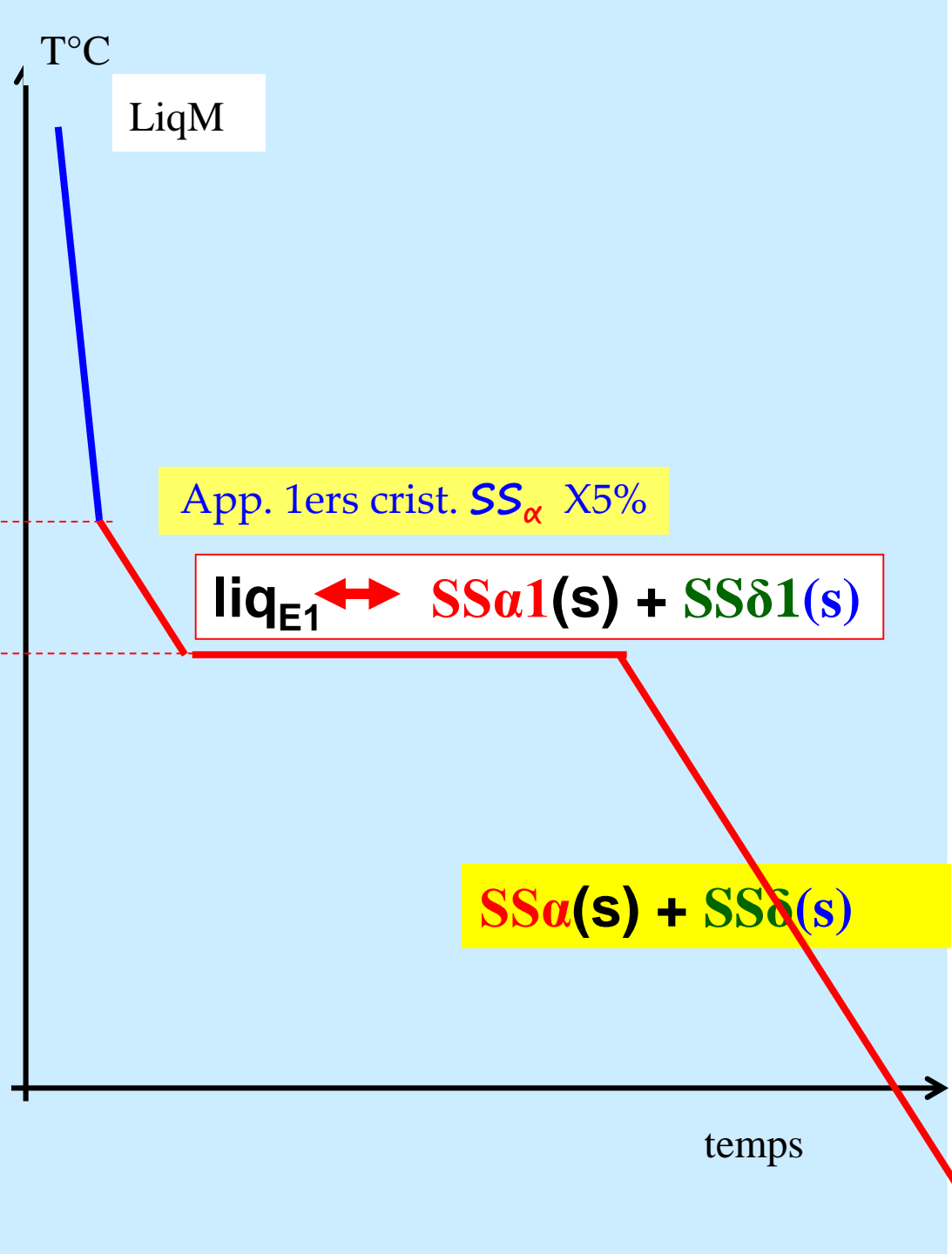
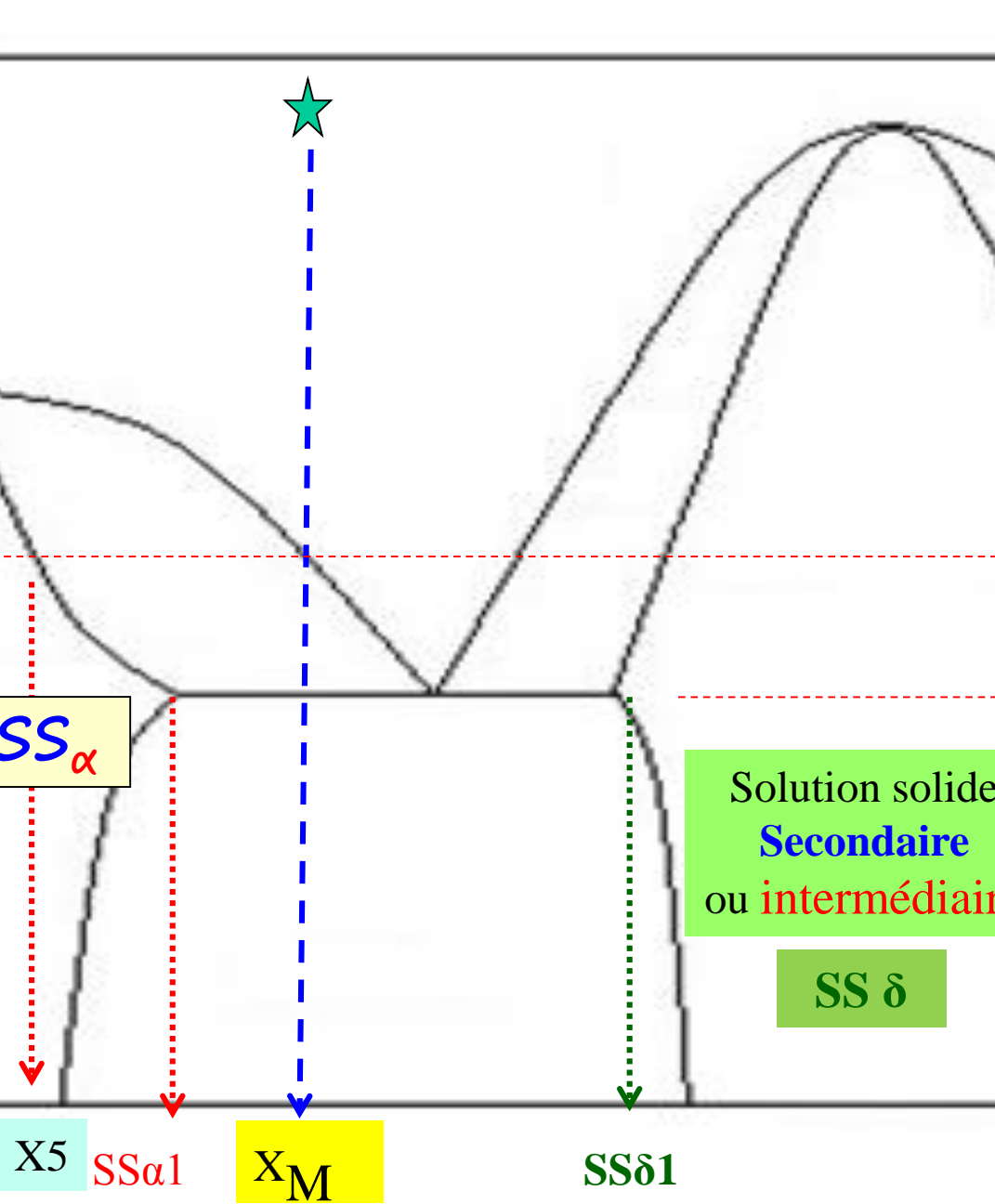
B











SS_α

Solution solide
Secondaire
ou intermédiaire

SS_δ

LiqM

App. 1ers crist. SS_α X5%

$liq_{E1} \leftrightarrow SS\alpha1(s) + SS\delta1(s)$

$SS\alpha(s) + SS\delta(s)$

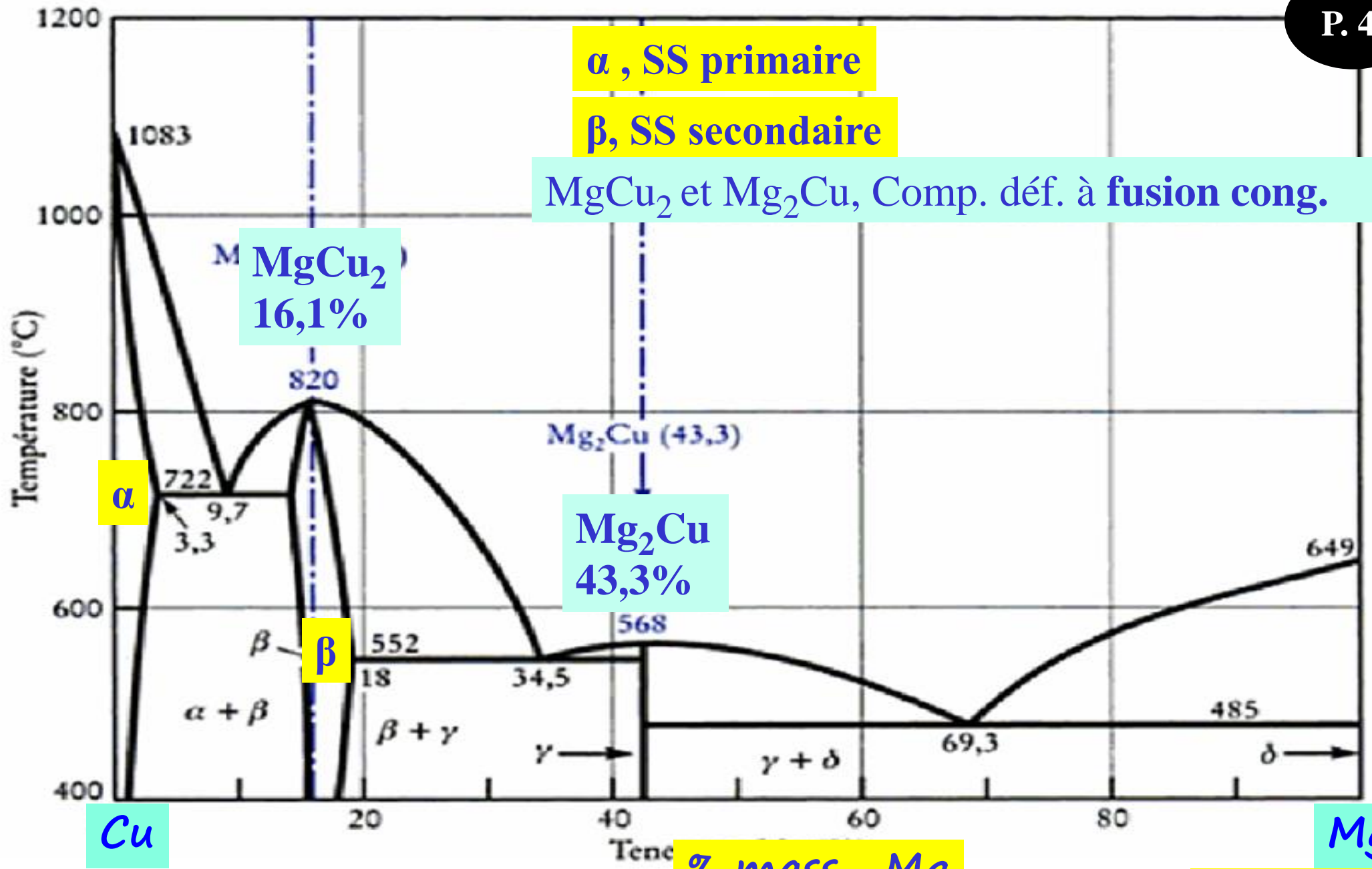
X5

$SS\alpha1$

X_M

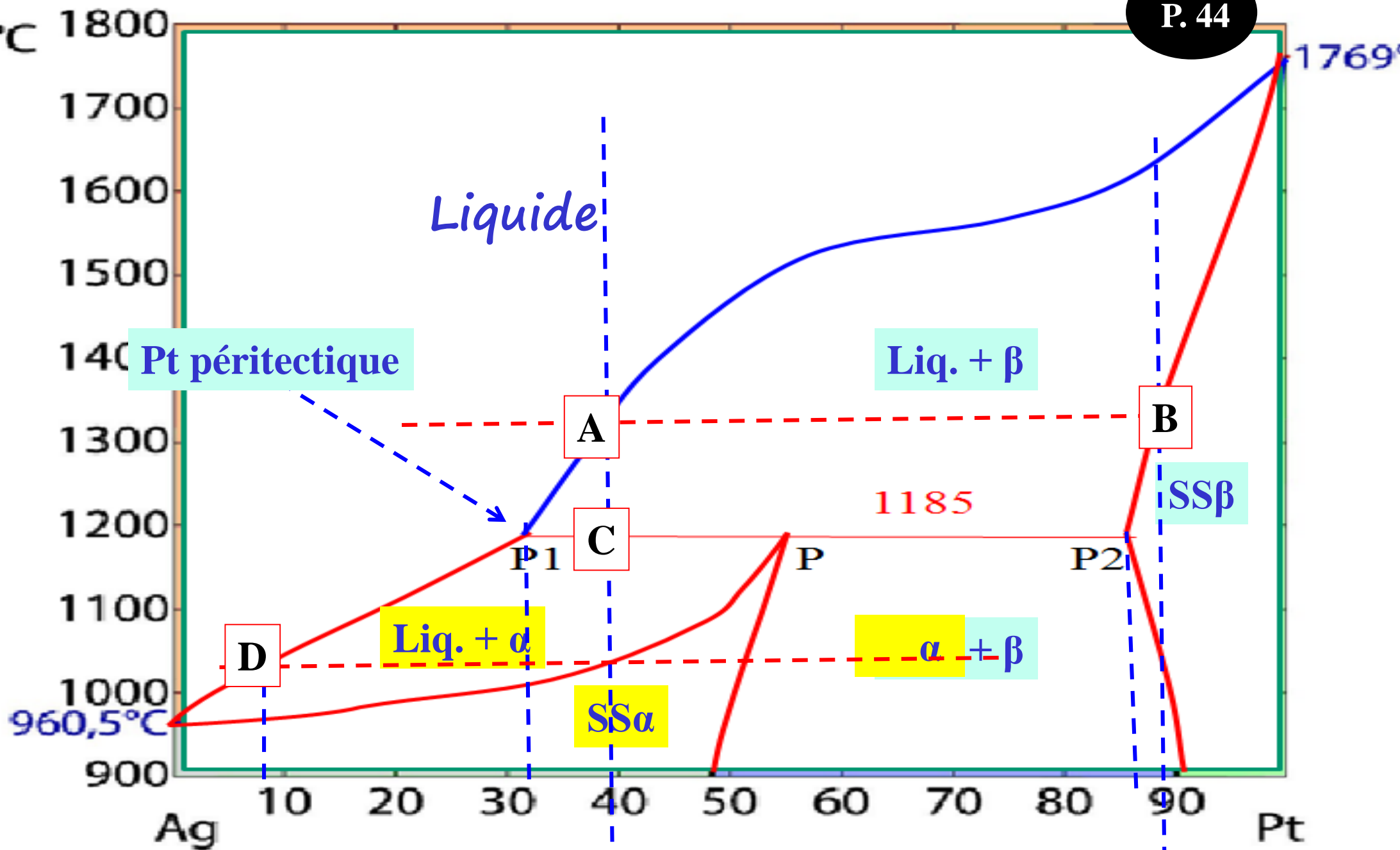
$SS\delta1$

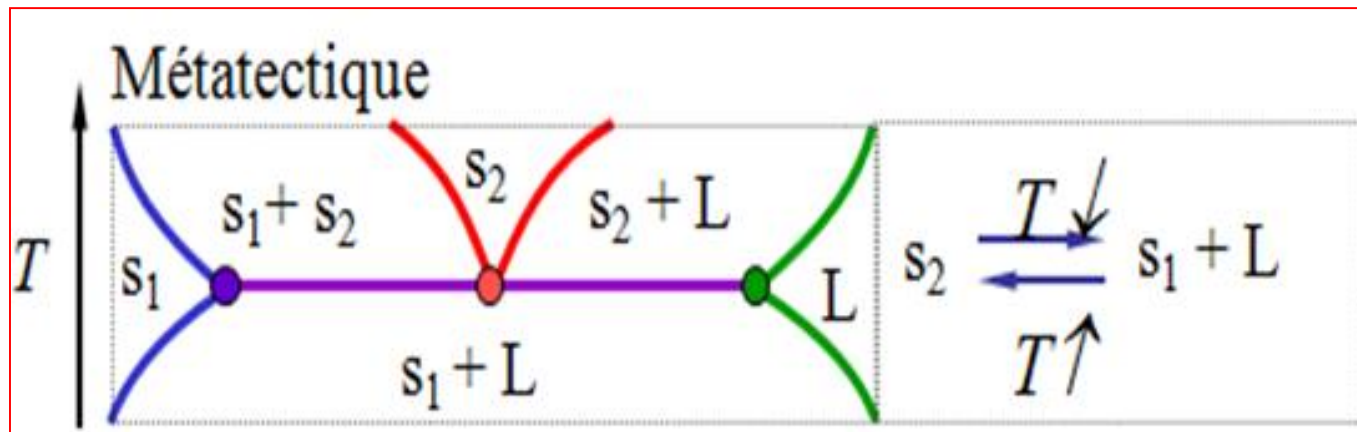
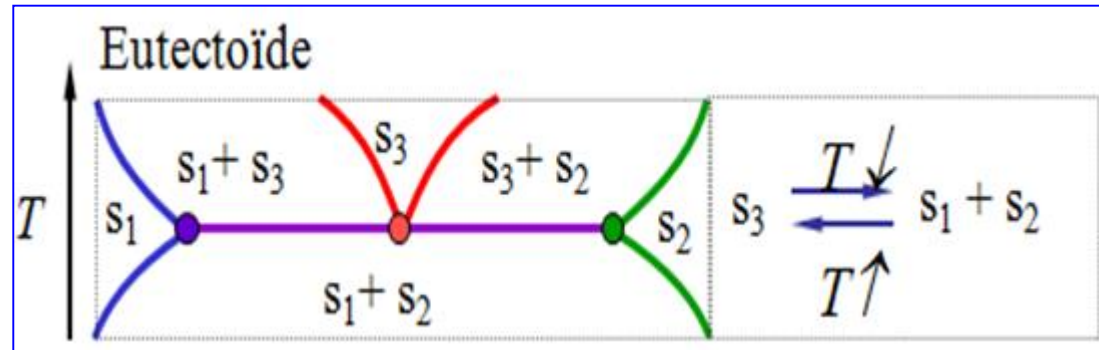
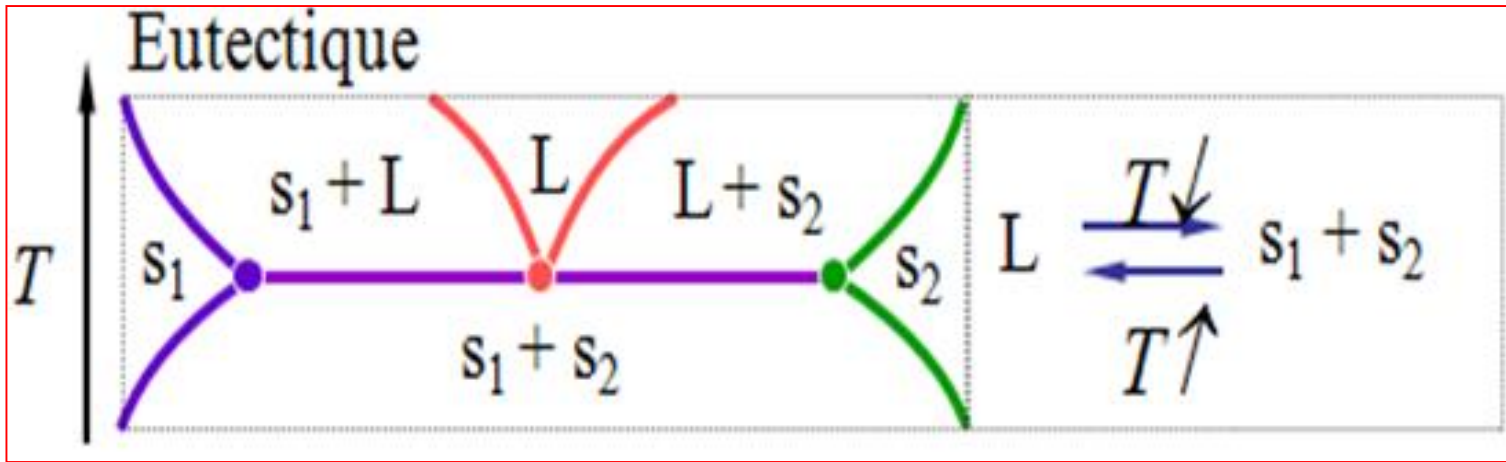
temps



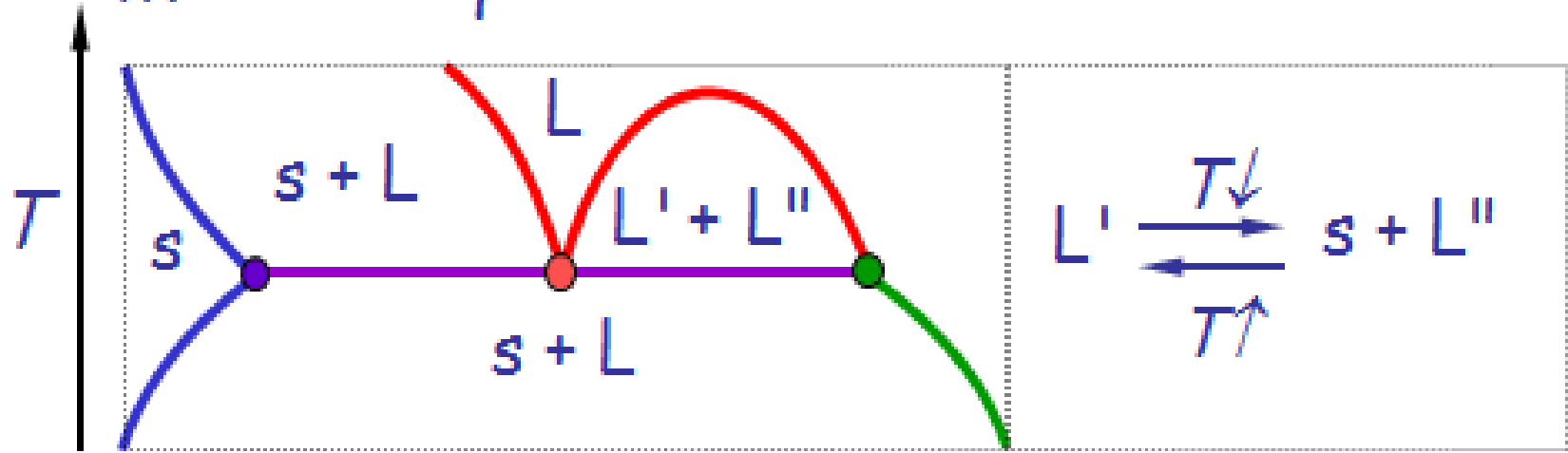
% mass. Mg

δ (=Mg(s))

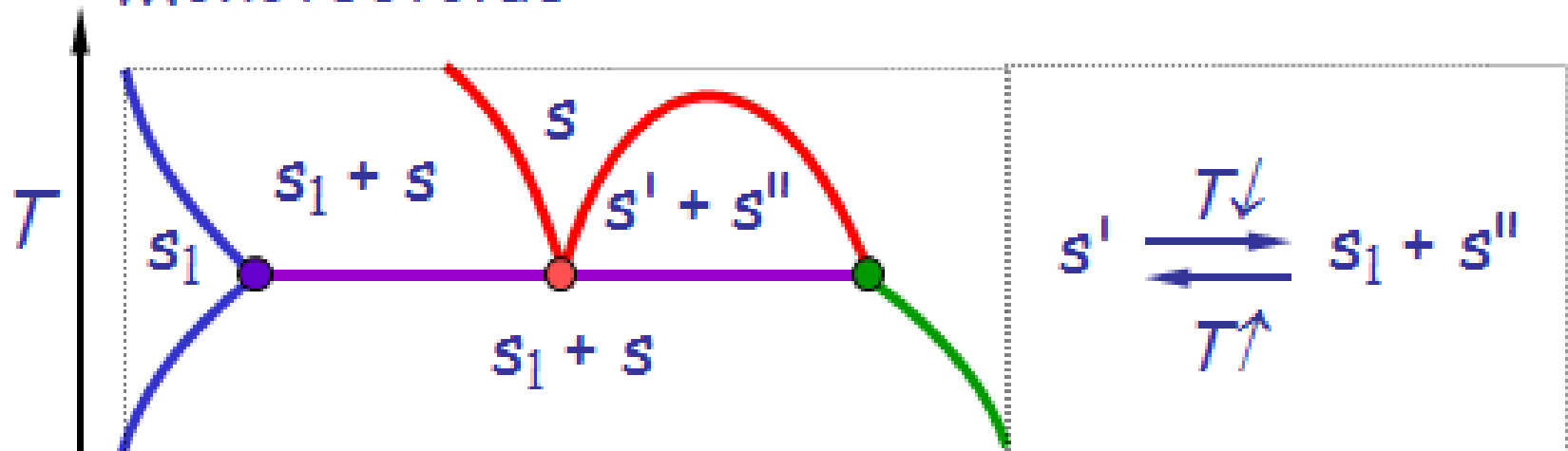


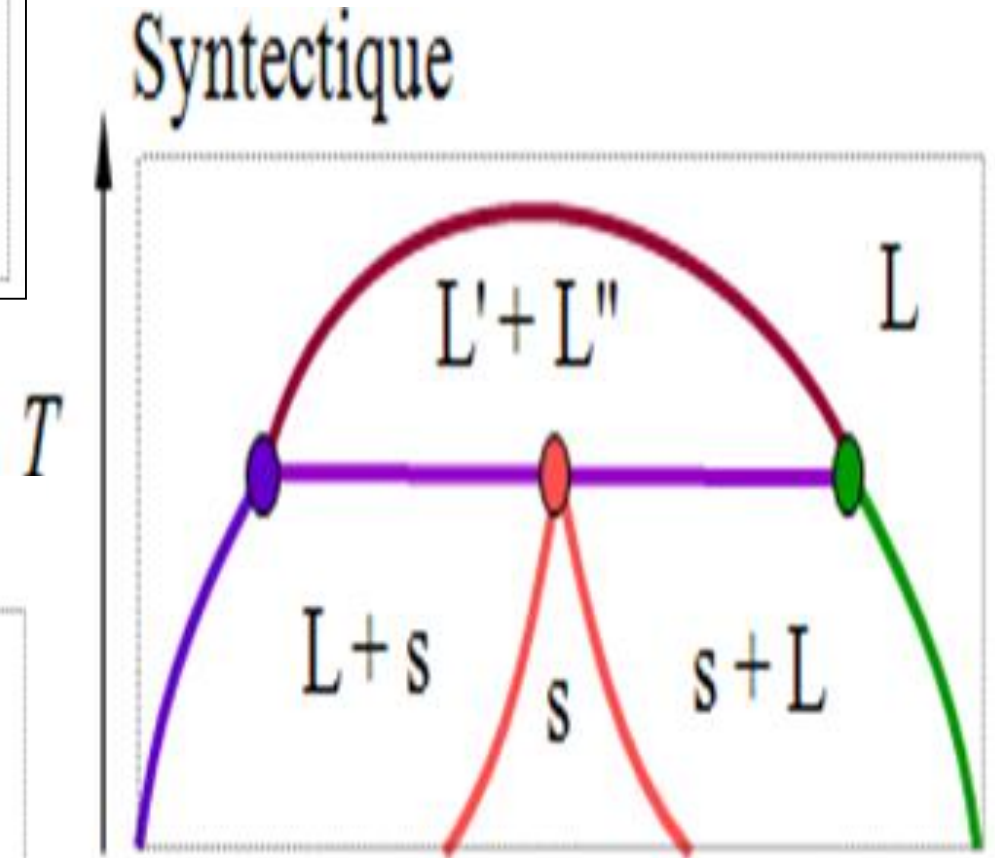
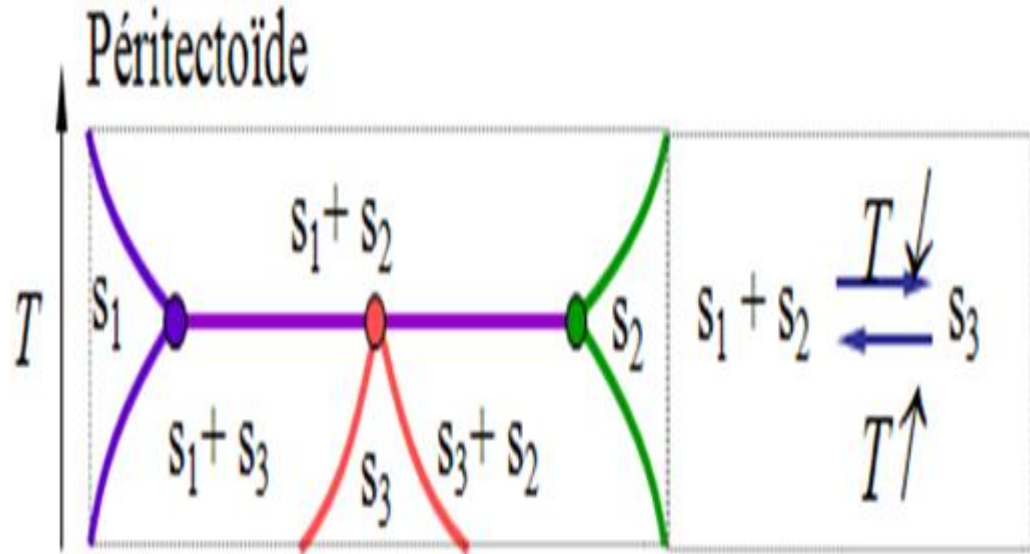
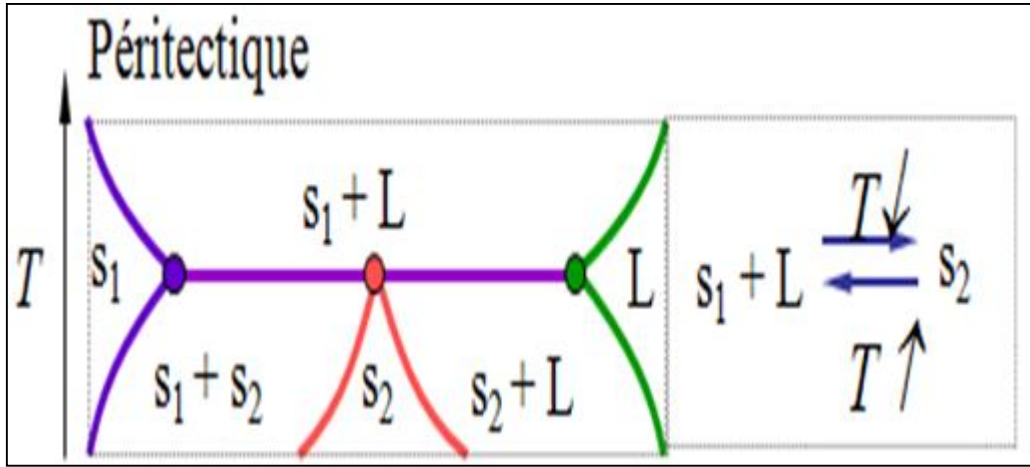


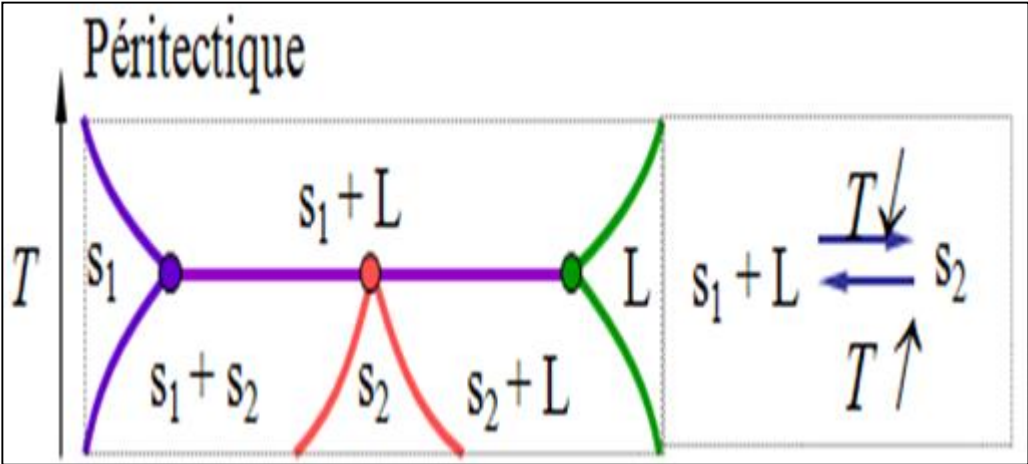
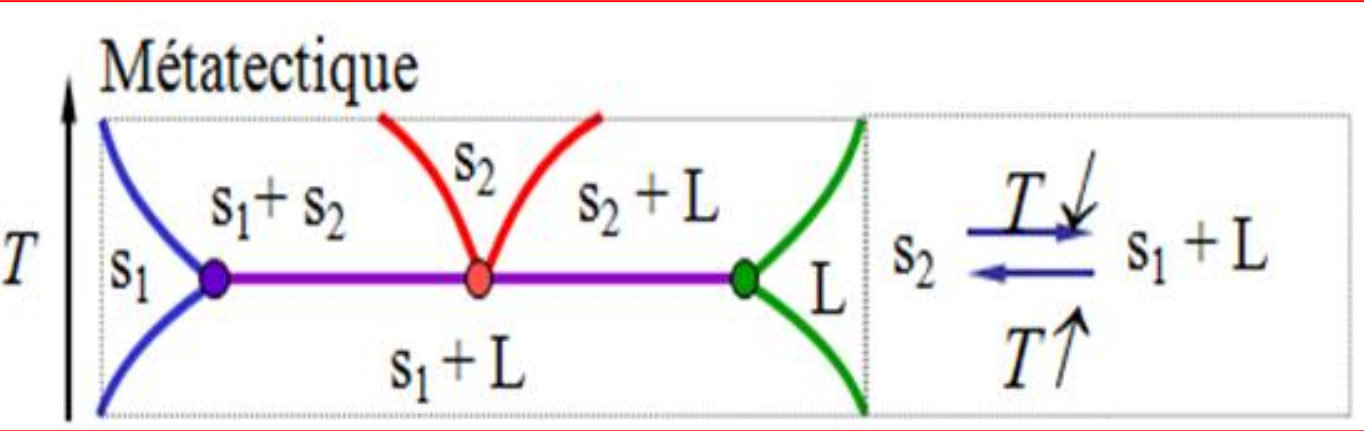
Monotectique



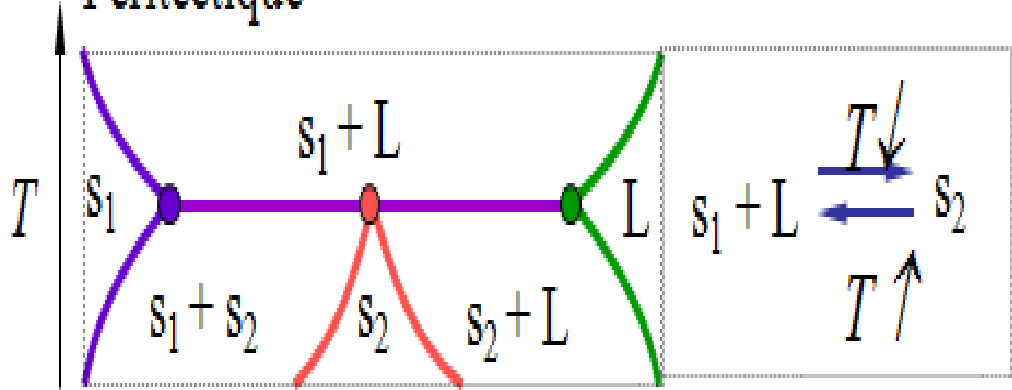
Monotectoïde



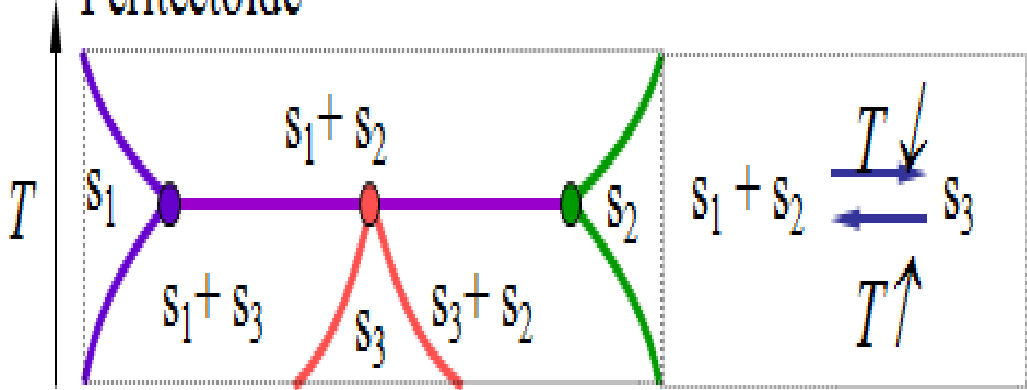




Péritectique



Péritectoïde



Syntectique

